

transmatic

Heat Seal Machines



TMH 28/29

TMH 28/29

I Dimensione piastra
Tensione alimentazione
Potenza max.
Consumo
Temperatura
Tempo regolabile
Pressione
Peso netto

TMH 28
38x38 cm
230 V monofase
KW 1,7
KW/h 0,9
50°-305° C
0-999 sec.
0-600 gr/cm²
Kg 32 / Kg 35,5

TMH 29
45x38 cm
230 V monofase
KW 2,0
KW/h 1,1
50°-305° C
0-999 sec.
0-600 gr/cm²
Kg 34 / Kg 37,5

Pressa a caldo a funzionamento manuale.
Piastra termica superiore basculante per ottenere una pressione costante tra le due piastre.
Regolazione elettronica del tempo e temperatura.
La piastra inferiore è intercambiabile.

D Plattengroesse
Spannung
Verbrauch
Verbrauch/h
Temperatur
Zeiteinstellung
Anpressdruck
Gewicht netto

TMH 28
38x38 cm
230 V mon.
KW 1,7
KW/h 0,9
50°-305° C
0-999 sec.
0-600 gr/cm²
Kg 32 / Kg 35,5

TMH 29
45x38 cm
230 V mon.
KW 2,0
KW/h 1,1
50°-305° C
0-999 sec.
0-600 gr/cm²
Kg 34 / Kg 37,5

Manuelle Thermopresse mit neuem Hebelsystem.
Freihängendes Oberplatte für eine immer homogene Druckleistung.
Einfache Druckregulierung auf dem Haupthebel.

UK Dimension of the plate
Current
Power consumption
Power consumption/h
Temperature
Time regulable
Pressure
Net weight

TMH 28
38x38 cm
230 V mon.
KW 1,7
KW/h 0,9
50°-305° C
0-999 sec.
0-600 gr/cm²
Kg 32 / Kg 35,5

TMH 29
45x38 cm
230 V mon.
KW 2,0
KW/h 1,1
50°-305° C
0-999 sec.
0-600 gr/cm²
Kg 34 / Kg 37,5

Manual heat press.
The top plate is not fixed in a rigid manner to ensure an homogeneous pressure between the upper plate and the bottom plate.
Electronic time and temperature regulation.
The bottom plate is interchangeable.

F Dimension de la plaque
Voltage
Consommation totale
Consommation/h
Température
Régulation du temps
Pression
Poids net

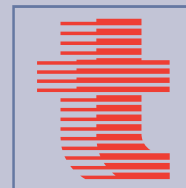
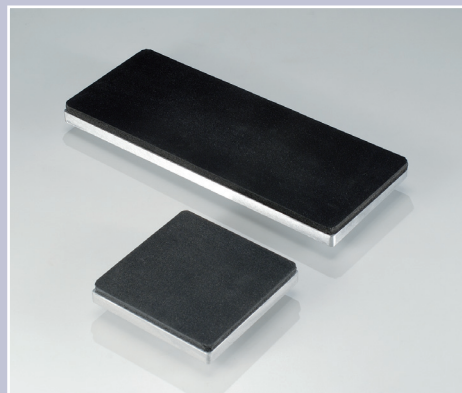
TMH 28
38x38 cm
230 V mon.
KW 1,7
KW/h 0,9
50°-305° C
0-999 sec.
0-600 gr/cm²
Kg 32 / Kg 35,5

TMH 29
45x38 cm
230 V mon.
KW 2,0
KW/h 1,1
50°-305° C
0-999 sec.
0-600 gr/cm²
Kg 34 / Kg 37,5

Presse à chaud manuelle. Plaque supérieure basculante qui permet d'avoir une pression constante.
Régulation électronique du temps et de la température.
La plaque inférieure est interchangeable.

I dati e le caratteristiche tecniche sono puramente indicativi e soggetti a variazioni senza obbligo di preavviso.

All data and technical features are purely indicative and subject to changes without prior notice.



transmatic s.r.l.

Via Enzo Ferrari, 9/11/13
20824 Lazzate (MB) - ITALY
Tel. +39 02 96329816 - +39 02 96329024
Fax: +39 02 96728422
e-mail: info@transmaticsr.com
web: www.transmaticsr.com